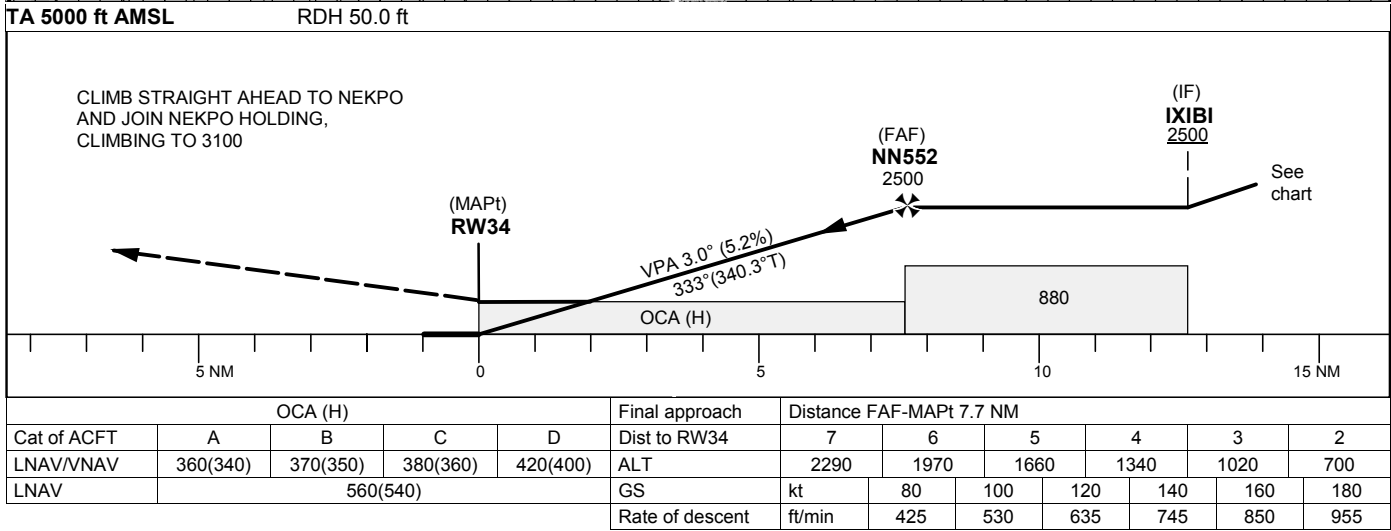
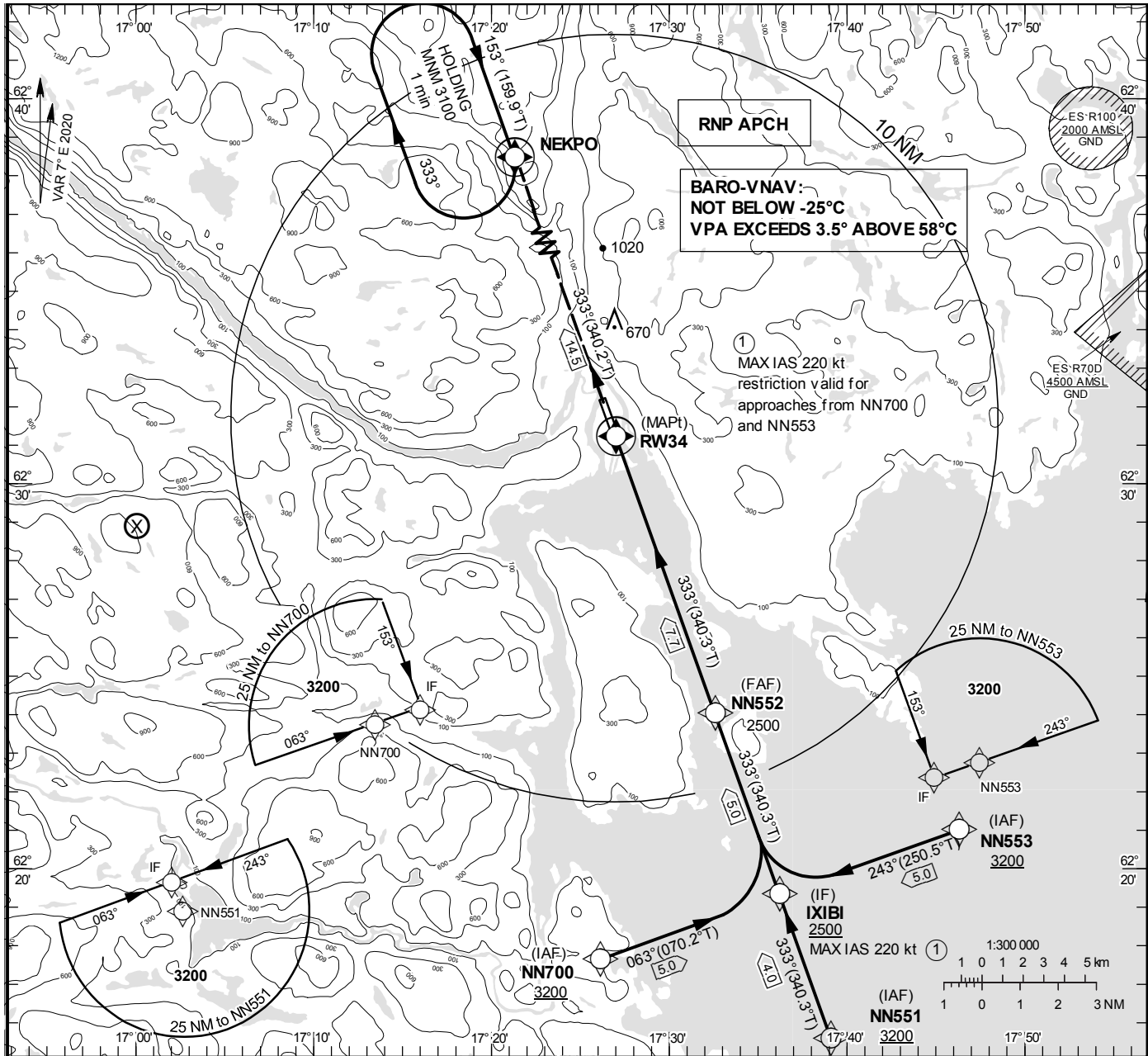


SUNDSVALL-TIMRÅ
RNP RWY 34
(LNAV, LNAV/VNAV only)

INSTRUMENT APPROACH CHART – ICAO
THR ELEV 13.3 ft, AD ELEV 17 ft
OCH are related to THR.
BRG are MAG (True).
ALT, HGT and ELEV in ft.

SUNDSVALL TOWER 129.555
SUNDSVALL ATIS 127.405



CHANGE: Editorial

SUNDSVALL-TIMRÅ

RNP RWY 34 via NN553

Path Desc	Waypoint Identifier	Fly-over	Course °M(°T)	Dist (NM)	Turn Dir	Altitude	Speed	VPA/ RDH	Rec Navaid	Navigation Specification
IF	NN553	-	-	-	-	+3200	-	-	-	RNP APCH
TF	IXIBI	-	243°(250.5°)	5.0	-	+2500	-220	-	-	RNP APCH

RNP RWY 34 via NN551

Path Desc	Waypoint Identifier	Fly-over	Course °M(°T)	Dist (NM)	Turn Dir	Altitude	Speed	VPA/ RDH	Rec Navaid	Navigation Specification
IF	NN551	-	-	-	-	+3200	-	-	-	RNP APCH
TF	IXIBI	-	333°(340.3°)	4.0	-	+2500	-	-	-	RNP APCH

RNP RWY 34 via NN700

Path Desc	Waypoint Identifier	Fly-over	Course °M(°T)	Dist (NM)	Turn Dir	Altitude	Speed	VPA/ RDH	Rec Navaid	Navigation Specification
IF	NN700	-	-	-	-	+3200	-	-	-	RNP APCH
TF	IXIBI	-	063°(070.2°)	5.0	-	+2500	-220	-	-	RNP APCH

Path Desc	Waypoint Identifier	Fly-over	Course °M(°T)	Dist (NM)	Turn Dir	Altitude	Speed	VPA/ RDH	Rec Navaid	Navigation Specification
IF	IXIBI	-	-	-	-	+2500	-	-	-	RNP APCH
TF	NN552	-	333°(340.3°)	5.0	-	@2500	-	-	-	RNP APCH
TF	RW34	Y	333°(340.3°)	7.7	-	@63	-	-3.0/50	-	RNP APCH
TF	NEKPO	Y	333°(340.2°)	14.5	-	-	-	-	-	RNP APCH
HM	NEKPO	Y	153°(159.9°)	-	R	+3100	-	-	-	RNAV 1